

CREATE! **alicon**



alicon Series
Breakers



DAEMO

DAEMO ENGINEERING CO., LTD.

Engineered for Excellence

Responsible Promise

Advanced Value

Powerful Performance

Challenging Effort

Features of alicon Series

The newly born alicon Series has innovated with technology, is Lighter, stronger, and more powerful than ever.

By enlarging the diameter of the T/Bolt the alicon series has Improved its durability.

Changed the hose connecting port from Split Flange structure In/Out port to New Adapter type port. This new port reduces possible fail points like connected bolt breakage, and oil leakage fundamentally. (It applies to all models: B10~B800)

Changed the Box Housing to Bending design for more durability.

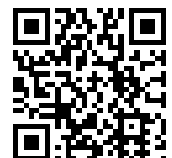
More options : Anti Blank Firing On/Off Valve, TPC system (2 stages stroke valve), Internal Relief Valve, BPM adjust Valve, Provision Hole for underwater works and Auto Grease System.

Diversified 17 products lines to fit to any work conditions.

Redesigned chisel pin has improved durability.

Applied more powerful impact power by enlarging the chisel's diameter.

Increased the life of the breaker (Chisel Pins, T/Bolts, F/Heads, etc.) by applying the Anti Blank Firing system.



Attachments for Every Requirement

Choice of Options

Auto Grease Bracket Mounted System

This system has many advantages:

- Save human negligence of filling grease.
- To greasing several times a day, manual control does not need.
- Contributing to longer machine life, especially for chisels.
- No extra power source to drive.
- Applicable breakers are from B140 to B800.

2 Stroke Remote Control System

- 2 Stroke Remote Control System is designed to be connected to Cabin conveniently so that operator can change the required stroke easily without wasting time.(B210~B800)
- Improved performance.
- Reduced the amount of wasted energy.



Shape of chisel

Classification	Major Contents		
Moil			Concrete, Rocks, Pavements, Slopes
Wedge			Trench, Slopes, Finishing
Blunt			Quarries
Conical			Concrete, Rocks, Pavements

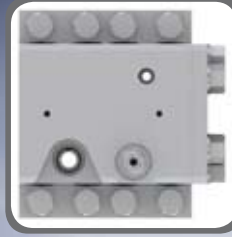
Choosing the chisel for different rock types

Classification	Rock	Recommended Breakers	Recommended Chisels
Hard Rock	Basanite, Granite, Diabase	B140 to B800	Blunt type, Wedge type
Soft Rock	Sandstone, Limestone, Coal	B10 to B800	Moil type, Wedge type, conical type



Valve Case with TPC (Total Power Control) system

- We have shortened the Height & Length of the valve case, but made the width wider for additional balance.
- Valve Plate : Increased the durability by using 6 bolts instead of 4 bolts.
- 2 stroke selector is located on the Valve case as a standard (B210~B450) to change from long stroke to short stroke according to operator's need for optimal performance.
- On the alicon series, there are more advanced functions to provide better choice to operator as an option : BPM Adjuster, Relief Valve, 2 stroke Remote Control valve (This is designed to be connected to Cabin conveniently, so that operator can change the required stroke easily without wasting time.(B210~B450)
- For B600, B800, we provide 2 stroke Remote Control valve as a standard.



Energy Regeneration Valve

- After the piston hits the chisel, and the piston is retracting back up the cylinder, while the flow energy is harnessed up to 15% to be applied on the flow energy back down. (B600, B800)



2 Stroke Selector System

- 2 stroke selector is located on the side of Cylinder as a standard(B50~B180) to change from long stroke to short stroke according to operator's need for optimal performance.



alicon

Seal System

- By using only NOK seals on the alicon series, we have achieved longer seal life.
- On models B210 and up, an additional square buffer seal was added to increase the durability of the gas seals, step seals, and the piston.
- This buffer seal also helps to minimise the piston's shaking action.



ABF(Anti Blank Firing) System with Auto Control Valve

- ABF(Anti Blank Firing) System is provided as a standard starting from B50 to B800 Model.
- This system will help to protect the Chisel pins, T/Bolts and Front heads from Blank Firing, and it is suitable for all kinds of working environment.
- When Auto control valve is turned on, breaker operation will automatically start again by giving a small amount of pressure to Chisel, It will automatically stop when chisel is lift up or after breaking.
- But, from B600 to B800 models can not turn off the auto control valve to protect the breaker more perfectly.
- The distinctive feature will protect the equipment from Secondary breaking and amateur's operation by having the functioning of Anti Blank Firing automatically on breaker.

alicon Series Breaker Specification

Item	Unit	B10	B20	B30	B40	B50	B70	B90	B140	B180	B210	B230	B250	B300	B360	B450	B600	B800
Operating Weight (Top Box BKT.)	kg	123	155	190	199	333	431	614	929	1209	1738	1777	2165	2832	2937	3713	4105	5625
	lb	271	342	419	439	734	950	1354	2048	2665	3832	3918	4773	6243	6475	8186	9050	12401
Overall Length (w/STD. MTG.BKT.)	mm	1128	1250	1352	1380	1603	1805	1981	2225	2455	2764	2764	2898	3200	3200	3595	3616	4059
	in	44.4	49.2	53.2	54.3	63.1	71.1	78.0	87.6	96.7	108.8	108.8	114.1	126.0	126.0	141.5	142.4	159.8
Overall Length (w.o/MTG. BKT)	mm	988	1110	1212	1214	1419	1591	1760	1962	2153	2395	2395	2526	2790	2790	3173	3133	3505
	in	38.9	43.7	47.7	47.8	55.9	62.6	69.3	77.2	84.8	94.3	94.3	99.4	109.8	109.8	124.9	123.3	138.0
Chisel Out Dia.	mm	40	45	53	62	70	78	85	105	120	135	140	145	150	155	165	180	200
	in	1.6	1.8	2.1	2.4	2.8	3.1	3.3	4.1	4.7	5.3	5.5	5.7	5.9	6.1	6.5	7.1	7.9
Chisel Length	mm	425	500	580	625	730	806	850	975	1165	1250	1250	1280	1400	1400	1650	1500	1700
	in	16.7	19.7	22.8	24.6	28.7	31.7	33.5	38.4	45.9	49.2	49.2	50.4	55.1	55.1	65.0	59.1	66.9
Settling Pressure	kgf/cm ²	150	150	150	150	170	180	190	190	210	210	210	210	210	210	210	240	250
	psi	2134	2134	2134	2134	2418	2560	2702	2702	2987	2987	2987	2987	2987	2987	2987	3414	3556
Working Pressure	kgf/cm ²	80~110	80~110	90~120	90~120	100~140	100~140	100~140	120~160	120~170	130~170	130~180	140~180	140~180	140~180	140~180	150~190	150~190
	psi	1138~1565	1138~1565	1208~1707	1208~1707	1422~1991	1422~1991	1422~1991	1707~2276	1707~2418	1849~2418	1849~2560	1991~2560	1991~2560	1991~2560	1991~2560	2134~2702	2134~2702
Oil Flow	lpm	15~25	20~30	25~40	30~50	30~55	45~80	50~100	90~110	100~140	110~160	130~170	150~210	180~250	180~250	200~280	280~398	322~454
	gpm	4.0~6.6	5.3~7.9	6.6~10.6	7.9~13.2	7.9~14.5	11.9~21.1	13.2~26.4	24~29	26.4~37.0	29.1~42.3	34.3~44.9	39.6~55.5	47.6~66.0	47.6~66.0	52.8~74.0	74.0~105.1	85.1~119.9
Blow Rate (H/Speed)	BPM	800~1200	600~1000	550~950	400~1000	350~900 (450~1000)	350~900 (450~1000)	300~700 (550~950)	350~550 (500~750)	350~550 (500~850)	350~500 (450~600)	250~400 (350~500)	250~350 (300~450)	200~350 (300~480)	200~350 (300~480)	200~300 (300~450)	294~480 (368~600)	231~374 (298~484)
	kgf/cm ²	16.5	16.5	16.5	12	12	12	12	12	12	11	11	11	11	11	11	11	11
Back Head N ₂ Gas Pressure	psi	234.6	234.6	234.6	171	171	171	171	171	171	156	156	156	156	156	156	156	156
	ton	0.5~1.5	0.8~1.5	1.2~4	3~4.5	3~8	5~8	6~9	10~15	16~20	18~25	18~25	22~29	26~32	28~36	40~50	42~81	55~100
Suitable Exca.	ton	1102~3306	1763~3306	2644~8818	6612~9921	6612~17637	11020~17637	13228~19842	22046~33069	35274~44092	39683~55116	39683~55116	48502~63934	57320~70548	61729~79366	88185~110231	92594~178574	121254~220462
	lb	1102~3306	1763~3306	2644~8818	6612~9921	6612~17637	11020~17637	13228~19842	22046~33069	35274~44092	39683~55116	39683~55116	48502~63934	57320~70548	61729~79366	88185~110231	92594~178574	121254~220462





Suitable Excavators

MODEL	TON	HYUNDAI	CATERPILLAR	KOMATSU	HITACHI	VOLVO	DOOSAN	JCB
B10	0.5~1.5	R16-9		PC09-1F,PC09-1	EX8-2B		Solar010	8008,
B20	0.8~1.5	R27Z-9		215,PC12R-8,PC09-1 218, PC15R-8, PC20MRx-1, PC20R-8, 226, 232, PC14R-3, PC16R-3, PC18MR-3, PC20MR-2, PC26MR-3	ZX10U-2, ZX14-3, EX17, EX22		S015,DX15	8010,
B30	1.2~4	R35Z-7A, R35Z-9			ZX16, ZX18, ZX17U-2, ZX210-3, ZX22U-2, ZX25, ZX30, ZX16-3, ZX18-3, ZX35, EX30 ZX27U-2, ZX35, ZX30U-2, ZX35U-2, ZX40, EX40	EC15B, EC20B, EC25, ECR28, EC30	Solar035super, Solar030super, S018, DX27Z, DX30Z	'8014, 8016, 8018, 8020, 8025ZTS
B40	3~4.5	R35Z-7A, R35Z-9	303C CR, 303.5C CR			EC30, ECR38, EC35	DX30Z, DX35Z S55-V, DX60R, DX55, DX55M7, DX55W, DX55A, DX55A-MT, DX55WA	8030ZTS
B50	3~8	R55-7A, R55W-7A, R55-7, R55W-7, R55Z-7A	304C CR, 304C CR, 305C CR	PC40MRx-1, PC45R-8, 250, PC45MR-3, PC50MR-2, PC55MR-3	ZX40, ZX50, ZX40U-2, ZX50U-2, ZX60USB-3, EX50, ZX70, ZX80SB, ZX85USB-3, ZX70LC-3, EX60, EX70, TATA315	EC45Pro, ECR58 Plus, EC55B, EC55C, EW60C		8040 ZTS, 8045 , 8052ZTS, 8060
B70	5~8	R60-9S, R60CR-9, R80CR-9, R80-7	308D CR, 307D	PC75MR-6, PW75R-2, PC78US-6		ECR88 PLUS	S75-V	JZ70, 8080
B90	6~9	R80-7, R80-7A, R80CR-9	308D CR, 308CR SB	PC95R-2, PC110R-1, PW75R-2, 410, PW95R, PC80MR-3, PC88MR-8	ZX85USB-3, ZX85US-3, 85USBLC-3, EX90			
B140	10~15	R110-7, R110-7A, R140LC-7, R140W-7, R140LC-7A, R140LCM-7, R140LCD-7, R140W-7A, R140W-9S, R140LC-9S	311C Utility, 311C, 311D LRR, 312D, 312D L, 314D LCR, M313D, M315D	PC130-7, PC138US-2, PW110R-1, PW130ES-6, PC130-8, PC138USLC-8	ZX110-3, ZX130-3, ZAXIS130W, ZX110M-3, ZX130LCN-3, ZX135US-3, EX100, EX110	EC140B, EC145LC, EW140C, EW145B Prime, EC140B Prime, EC140C, ECR145C	DX140LC, DX160LC, Solar140W-V, S155LC-V, DX140W, DX140	JS115, JS130, JS145, JS130W, JS145W, JZ140LC
B180	16~20	R160LC-7, R160LC-7A, R160LC-9S, R170W-7A, R170W-9S, R180LC-9S, R180LC-7, R180LC-7A, R200W-7A, R200W-7	315D L, 318C L, 319D LN, M316D, M318D	PC160LC-7, PC180LC-7, PW150ES-6, PW170ES-6	ZX160LC-3, ZX180LC-3, ZAXIS160W, ZAXIS180W, ZX180LCN-3, EX160	EC160C, EC180C, EW160C	DX160LC, DX180, Solar160W-V, Solar180W-V	JS160, JS180, JS160W, JS175W
B210	18~25	R200W-7A, R210W-9S, R210LC-7A, R220LC-9SH, R220-7H, R220LC-7H, R210LC-7, R210LC-7ALR, R210LC-7LR, R210LC-7H, R210NLC-7A, R210W, R220LC-9S	320D, 320D L, M322D	PC210LC-7, PW200-7, PW220, PC200LC-8, PC220LC-8	ZX210LC-7, ZAXIS210WZX210-3, ZX210LCN-3, EX200, EX210	EC210C, EC210B, EC210B Prime, ECR235C		JS190, JS200L, JS210L, JS220L LR, JS220, JS220XD, JS200W
B230	18~25	R250LC-7, R250LC-7A, R260LC-9S, R290LC-7A, R290LC-7ALR	323D L, 323D LN, 323D LRR, 321C LCR, M322D	PC230NHD-7, PC230NHD-7, PC228USLC-3, PC240NLC-7	ZX240N-3, ZX225USLC-3, EX210	EC240B, ECR235CL	DX220LC, DX225 NLC, DX225 LC, DX210W, DX255, S225LC-V	JZ235, JS230 HO, JZ255
B250	22~29	R250LC-7, R250LC-7A, R290LC-7A, R300LC-9S, R300LC-9SH, R320LC-7, R320LC-7A, R330LC-9SH, R305LC-7, R300LC-9S, R360LC-7A, R370LC-7, R380LC-9SH	323D S, 324D, 324D L, 330	PC240NLC-7, PC270LC-8	ZX250LC-3, EX220	EC240B	S255LC-V	JS240L, JS260L LR, JS290
B300	26~36	R290LC-7A, R300LC-9S, R300LC-9SH, R320LC-7, R320LC-7A, R330LC-9SH, R305LC-7, R300LC-9S, R360LC-7A, R370LC-7, R380LC-9SH	350D L, 324D LN, 328C LCR, 329D, 330D L, 336D, 325D L, 325LN, 328D LCR, 329D L, 336D L	PC290LC-7, ZX350LC-7, PC340LC-7, PC308USLC-3, PC300LC-8, PC350LC-8, PC350HD-8, PC400LC-8	ZX350LC-3, ZX280LC-3, ZX280LCN-3, ZX350LCN-3, EX270, EX300, EX350	EC290B, ECR305CL, EC360B, EC290B Prime, EC360B Prime, EC360C	DX300LC, Solar300SLR, DX340LC, DX350LC, DX360LCA, DX380LC, DX300LCA, DX350LCA, DX380LCA	JS290, JS330L, JS330LC
B450	40~55	R450LC-7, R450LC-7A, R480LC-7S, R480LC-9S, R500LC-7A	345C L, 345C, 345D, 345DL	PC450-7, PC450LC-8, PC300HD-7	ZX470LCH-3, ZX520LCH-3, ZX500LC-3, ZX520LCR-3, EX400	EC460B	DX420LC, DX480LC, DX500LCA, DX420LCA, DX480LCA,	JS460
B600	42~75	R500LC-7, R520LC-9S		PC600-7, PC600LC-7, PC600LC-8,	ZX650LC-3, ZX670LCH-3, ZX670LCR-3 ZX870LCH-3,	EC460C	DX520LCA, DX520LC	
B800	65~150	R800LC-7A, R800LC-9	365CL, 365C, 385C L, 385C	PC750LC-7, PC800LC-8,	ZX850LC-3, ZX870H-3, ZX870LCR-3	EC700B		

BREAKER

alicon Series Breakers - Application

Contents	B10	B20	B30	B40	B50	B70	B90	B140	B180	B210	B230	B250	B300	B360	B450	B600	B800
Underwater works	-	-	-	●	●	●	●	●	●	●	●	●	●	●	●	●	●
Auto Greasing System Hole	-	-	-	-	●	●	●	●	●	●	●	●	●	●	●	●	●
TPC(Total Power Control) System Selector Type	-	-	-	-	●	●	●	●	●	●	●	●	●	●	●	-	-
ABF(Anti Blank Firing) System	-	-	-	-	●	●	●	●	●	●	●	●	●	●	●	●	●
Energy Regeneration Valve	-	-	-	-	-	-	-	-	-	-	-	-	-	-	-	-	-
Auto Greasing Unit	-	-	-	-	-	-	-	●	●	●	●	●	●	●	●	●	●
Central Grease Supply Unit	-	-	-	-	●	●	●	●	●	●	●	●	●	●	●	●	●
BPM Adjuster	-	-	-	-	-	-	-	-	-	●	●	●	●	●	●	-	-
Internal Relief Valve	-	-	-	-	-	-	-	-	-	●	●	●	●	●	●	-	-
TPC(Total Power Control) System Remote Control Type	-	-	-	-	-	-	-	-	-	●	●	●	●	●	●	●	●
Low Noise Housing Bracket	-	-	-	●	●	●	●	●	●	●	●	●	●	●	●	●	●

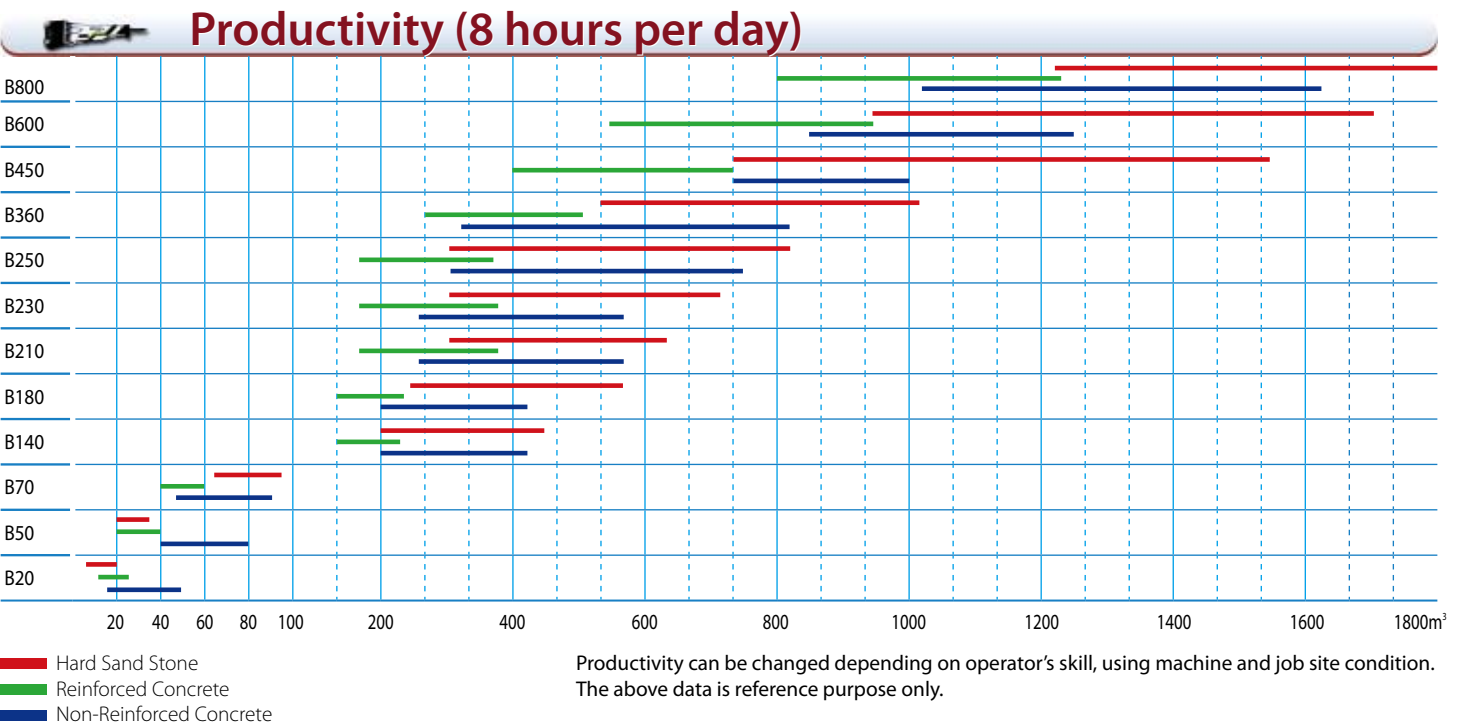
■ Standard
■ Option



Suitable Excavators

MODEL	TON	CASE	KOBELCO	NEW HOLLAND	JOHN DEER	LIEBHERR	HIDROMEK	SUMITOMO
B10	0.5~1.5		SK09SR	E95R, E18, E18 SR, E9 SR				
B20	0.8~1.5			E20.2SR, E16B,				
B30	1.2~4	CX16B, CX18B, CX20BZTS, CX22B ZTS, CX27BZTS	SK015MSR, SK016MSR, SK25SR-2, 27SR	E27, EC22.2SR, E18B, E27.2 SR	17D, 27D, 35D			
B40	3~4.5	CX31B ZTS, CX36B ZTS	SK30SR-2, 35SR	E30.2SR, E35.2SR				
B50	3~8	CX40B ZTS, CX50B ZTS	SK45SR-2, 50SR	E40.2 SR, E50.2SR	50D, 60D, JD410, JD315			
B70	5~8	CX75SR	SK70SR, SK80MSR	E70SR, E80MSR	80, 75D		HMK102B, 102BC, 102S	
B90	6~9	CX80, WX95, WX95 Series2	70SR, 80CS		85D			
B140	10~15	CX130, CX135SR, WX125, WX145, wx125 Series2, wx145 Series2	SK115SR, SK135SRLC, SK135SRL, 140SR	E115SR, E145, MH2.6, MH3.6, E135B, MH CITY	120C, 135C RTS, 120D, 135D	A312 Litronic, A314 Litronic	HMK140W	SH130-5
B180	16~20	CX160, CX180, WX165, WX185, WX165 Series2, WX185 Series2	SK160LC, SK170LC, ED150	E175, EW160, E135B SR, E150B, E175B, MH PLUS	160C LC, 160D LC, 190D WWheeled, 200D, 200D LC	A316 Litronic, A900C, A900C Litronic	HMK140W, HMK200W	SH160-5
B210	18~25	CX210 B, WX210, WX210 Series2, WX210 Industry Series2	SK200SRLC, SK210NLC, ED195, SK210LC	E200SR, E195B, MH5.6, MH6.6, MH8.6	210C LC		HMK220LC, HMK200W, HMK220LC-2, HMK200W-2	
B230	18~25	CX230, CX225SR, WX240, WX240Series2, WX240 Industry Series2	SK235SR, 215SR, SK210	E215, EW220, E215B LC, E215B, E225B SR	225C RTS, 230C LC, 225D LC	A904 C, A904C Litronic, A914C Litronic		SH210-5, SH210LC-7
B250	22~29	CX240B, CX290	SK250LC, 235SR, SK260LC	E265LC SLF, E245, E235SR, E245LC, 235B SR, E245B, E265B, E245B	240D LC, 270D LC	A924C Litronic, R914C Litronic, R924 Compact	HMK300LC	
B300	26~36					R935C, A934, A934C Litronic		SH330-5, SH330LC-5, SH350HD-5, SH350LHD-5
B360	26~36	CX290, CX330, CX350	SK330NLC, SK295LC, SK350LC	E335, E385, E305B, E385B	330C LC, 370C, 350D LC	A934C Litronic Material Handler, R934C Litronic	HMK300LC, HMK370LC	SH450LHD-5, SH460HD-5, SH480LHD-5, SH500LHD-5
B450	40~55		SK480LC	E485, E385B, E485B	450C LC, 450D LC	R944C Litronic		
B600	42~75		SK485LC		600C LC, 650D LC	A944, A944C HD Litronic Material Handler, R954C Litronic, R964C Litronic		SH700LHD-5
B800	65~150	CX700	SK600, SK850LC Super Acera	E805	800C, 850D LC	R964 C Litronic, A954C, A954C HD Litronic Material Handler		SH800LH-5

BREAKER



Quality Management System



BMS Board & Ultra Sonic Machine

Test Bench

Test Facility



DAEMO ENGINEERING CO., LTD.

HEAD OFFICE

ADDRESS : No 515, 2Ba, Siwha Industrial Complex, Jungwang-Dong, Siheung-City, Gyeonggi-Do, Korea
 TEL : +82-31-488-6000(Rep.) FAX : +82-31-496-0066
 Internet : <http://www.daemo.co.kr>
 E-mail : daemo@daemo.co.kr

DAEMO EUROPE N.V.

ADDRESS : MOESTOEMAATHEIDE 15, B-2440 GEEL, BELGIUM
 TEL : +32 (0)14/ 59.23.33
 FAX : +32 (0)14 / 59.03.16
 Mobile : +32-473-816-020
 E-mail : shchung@daemo.co.kr

DAEMO AMERICA INC.

ADDRESS : 3343 CHICAGO AVE. RIVERSIDE, CA 92507, USA
 TEL : +1-951-684-2950, 951-684-2960
 FAX : +1-951-684-2961
 Mobile : +1-951-756-9555
 E-mail : samkim@daemo.co.kr

CHANGZHOU DAEMO MACHINERY CO.,LTD

ADDRESS : No269, Huanghexi Rd, XueJia Industrial Complex, Changzhou City, Jiangsu Province, China
 TEL : +86-0519-8595-9000 / FAX : +86-0519-8595-9009
 Mobile : +86-1335-789-9669
 E-mail : hjjung60@daemo.co.kr



PLEASE CONTACT